

# Bejeweled Hat

by Shaina Bilow



Shine bright and stay warm! Glittering jewels worked in stranded colorwork sparkle around this reversible hat and cozy cowl. The Bejeweled Hat uses two or more colors of fingering weight yarn.

# Sizing and Materials Details

**Sizes:** Small-Medium (Large-X-Large)

**Finished measurements:** 18 (20.5)"/45 (51) cm brim circumference & 12 (12)"/30 (30) cm depth when laid flat, brim unfolded.

**Gauge:** 28 sts and 28 rounds = 4"/10 cm in stranded colorwork using size needle to obtain gauge.

**Needles:** US 2/2.75 mm 16"/40 cm circular needle and DPN or size needed for gauge. *Adjust needle size as necessary to obtain the correct gauge.*

**Yarn:** Main Color (MC): 390 (450) yards of fingering weight (CYCA #1) yarn.

Contrast Color (CC): 200 (225) total yards of fingering weight (CYCA #1) yarn in one or more colors.

**Other Materials:** Stitch marker(s), scrap yarn or spare CC for crochet cast on, US C/3mm crochet hook, tapestry needle.





# Pattern Notes

- Placing markers where the pattern repeats occur (at the \* in the stitch pattern) will help keep the stitch patterns correct throughout.
- The stitch pattern is a multiple of 18 stitches. To adjust the circumference of the hat, cast on extra or fewer stitches in multiples of 18 according to gauge and preference. Yardage amounts necessary will vary.
- Colorwork patterns are provided in chart or written form. Where indicated, you are free to follow either version.
- The hat is reversible and has a double-thick layer of fabric. Stitches are cast on provisionally and the stranded colorwork side of the hat is knit. Then, the stitches are picked up along the provisional edge and the interior solid-color side of the hat is knit. The interior can be tucked inside the exterior side to make a doubly-warm hat.



- The sample hat was made with an assortment of 6 Contrast Colors. Use any number of CC as desired and in any order you choose. The sections listed in the pattern refer to the following colors from Shaina's 2025 Hanukkah Yarn Set:
  - MC: Almost Black
  - CC1: Aqua
  - CC2: Blue/Aqua speckle
  - CC3: Blue
  - CC4: Purple/Blue speckle
  - CC5: Purple
  - CC6: Pink/Purple speckle
- The hat pattern is written specifically to match the sample. If desired, work Jewel Patterns as desired until the hat measures 10"/25 cm from the cast on edge. Then, proceed with Crown Shaping, working patterns and colors as desired.

## Abbreviations

**CC** – Contrast Color.

**DPN** – Double Pointed Needles.

**k** – knit.

**k2tog** – knit two stitches together. One stitch decreased.

**MC** – Main Color.

**st/sts** - stitch/stitches.

**St-st** – Stockinette Stitch: When worked in the round, knit every round.

## Tutorial Videos

Shaina's YouTube Channel

<https://www.youtube.com/shainabilow>

Crochet/Provisional Cast On

[https://youtu.be/uZrBw3jh2\\_s](https://youtu.be/uZrBw3jh2_s)

Tips for Working Stranded Colorwork

<https://youtube.com/shorts/NKeCx9wluec>

Using DPN <https://youtu.be/79pUN2B6R04>



# Instructions

## Stranded Colorwork Side of the Hat (outer layer)

With US 2 (2.75 mm) needles, size C/3 mm crochet hook, and scrap yarn or spare CC, provisionally cast on 126 (144) sts using the Crochet Cast On. Attach MC and knit one row. Do not turn the work. Place marker and, being careful not to twist the sts, join the work in the round.

Work St-st for 20 rounds in MC.

Attach CC1 and work Chart 1. Cut CC1.

Knit 2 rounds in MC.

Attach CC2 and work Chart 2. Cut CC2.

Knit 2 rounds in MC.

Attach CC3 and work Chart 3. Cut CC3.

Knit 1 round in MC.

Attach CC4 and work Chart 4. Cut CC4.

Knit 1 round in MC.

Attach CC 5 and work Chart 5. Cut CC5.

Knit 1 round in MC.

Attach CC6 and work Chart 6. Cut CC6.

Knit 1 round in MC.

Piece measures approximately 10"/25 cm from the cast on edge.



## Crown Shaping

Change to DPN when sts become too tight on the circular needles.

*Small/Medium Size Only:*

**Round 1:** With MC, \*K1, k2tog, k2, k2tog; repeat from \* to the end of the round. 36 sts decreased. 90 sts remain.

*Large/Extra Large Size only:*

**Round 1:** With MC, \*(k1, k2tog) three times, k2, k2tog; repeat from \* to the last st, k1. 44 sts decreased. 100 sts remain.

*Both Sizes*

**Rounds 2-6:** Work Rounds 1-5 of Chart 7, striping CC3, CC1, and CC5 in the following way:

Chart 7 - Round 1: Attach CC3 and work in CC3.

Chart 7 - Round 2: Attach CC5 and work in CC5. Cut CC5.

Chart 7 - Round 3: Work in CC3.

Chart 7 - Round 4: Attach CC1 and work in CC1. Cut CC1.

Chart 7 - Round 5: Work in CC3. Cut CC3.

**Round 7:** With MC, knit.

**Round 8:** With MC, \*k2tog, k1, k2tog; repeat from \* to the end of the round. 36 (40) sts decreased. 54 (60) sts remain.

**Rounds 9-10:** Attach CC2. Work Rounds 1-2 of Chart 8. Cut CC2.

**Round 11:** With MC, knit.

**Round 12:** With MC, \*k1, k2tog; repeat from \* to the end of the round. 18 (20) sts decreased. 36 (40) sts remain.

**Round 13:** With MC, knit.

**Round 14:** With MC, \*k2tog; repeat from \* to the end of the round. 18 (20) sts decreased. 18 (20) sts remain.

**Round 15:** With MC, \*k2tog; repeat from \* to the end of the round. 9 (10) sts decreased. 9 (10) sts remain.

Cut yarn leaving a 10"/25 cm tail and thread the tail through the remaining 9 (10) sts with a tapestry needle to secure.

Weave in and secure the tails from the colorwork.

### Solid Color Side of the Hat (inner layer)

With the US 2/2.75 mm circular needle, carefully unravel the provisional cast on and place all the sts on the needle. 126 sts.

Place a locking stitch marker on the fabric just below the needle to indicate the starting point for measuring.

Place a stitch marker on the needle and join for working in the round. Attach MC and work in St-St until the hat measures approximately 10"/25 cm from the marker in the fabric.

### Crown Shaping

Change to DPN when sts become too tight on the circular needles.

*Small/Medium Size Only:*

**Round 1:** With MC, \*K1, k2tog, k2, k2tog; repeat from \* to the end of the round. 36 sts decreased. 90 sts remain.

*Large/Extra Large Size only:*

**Round 1:** \*(K1, k2tog) three times, k2, k2tog; repeat from \* to the last st, k1. 44 sts decreased. 100 sts remain.

*Both Sizes*

**Rounds 2-7:** Knit

**Round 8:** \*K2tog, k1, k2tog; repeat from \* to the end of the round. 36 (40) sts decreased. 54 (60) sts remain.

**Rounds 9-11:** Knit.

**Round 12:** \*K1, k2tog; repeat from \* to the end of the round. 18 (20) sts decreased. 36 (40) sts remain.

**Round 13:** Knit.

**Round 14:** \*K2tog; repeat from \* to the end of the round. 18 (20) sts decreased. 18 (20) sts remain.

**Round 15:** \*K2tog; repeat from \* to the end of the round. 9 (10) sts decreased. 9 (10) sts remain.

Cut yarn leaving a 10"/25 cm tail and thread the tail through the remaining 9 (10) sts with a tapestry needle to secure.

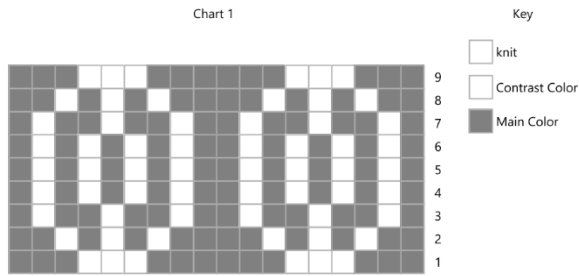
## Finishing

Weave in tails to the inside of the hat. Block the hat to smooth stitches. Push the crown of the solid color hat half into the hat towards the crown of the stranded colorwork hat half.



# Jewel Patterns

Chart 1



**Round 1:** \*K3 in MC, k3 in CC, k3 in MC; repeat from \* to the end of the round.

**Round 2:** \*K2 in MC, (k1 in CC, k1 in MC) 3 times, k1 in MC; repeat from \* to the end of the round.

**Round 3:** \*K1 in MC, (k1 in CC, k2 in MC) 2 times, k1 in CC, k1 in MC; repeat from \* to the end of the round.

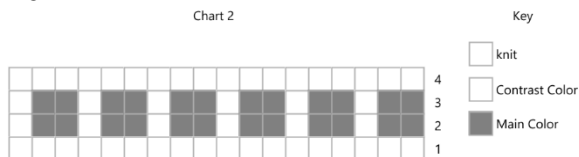
**Rounds 4-6:** \*K1 in MC, (k1 in CC, K1 in MC) 4 times; repeat from \* to the end of the round.

**Round 7:** Repeat Round 3.

**Round 8:** Repeat Round 2.

**Round 9:** Repeat Round 1.

Chart 2

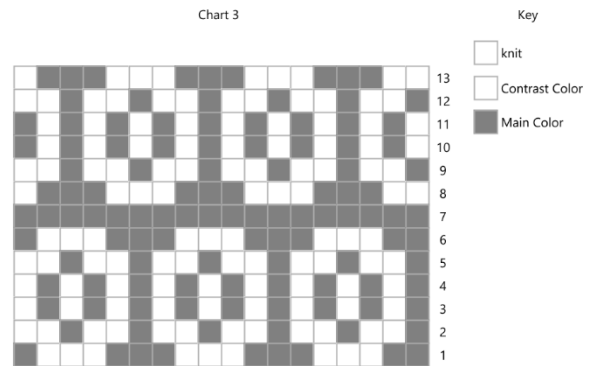


**Round 1:** With CC, knit.

**Rounds 2-3:** \*K2 in MC, k1 in CC; repeat from \* to the end of the round.

**Round 4:** With CC, knit.

Chart 3



**Round 1:** \*K2 in MC, k3 in CC, k1 in MC; repeat from \* to the end of the round.

**Round 2:** \*K1 in MC, k2 in CC; repeat from \* to the end of the round.

**Rounds 3-4:** \*K1 in MC, k1 in CC; repeat from \* to the end of the round.

**Round 5:** Repeat Round 2.

**Round 6:** Repeat Round 1.

**Round 7:** With MC, knit.

**Round 8:** \*K2 in CC, k3 in MC, k1 in CC; repeat from \* to the end of the round.

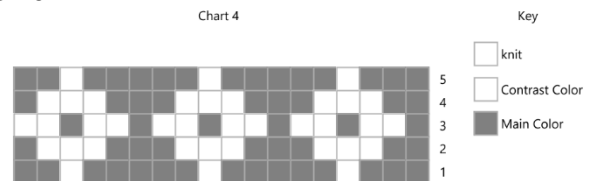
**Round 9:** \*K1 in MC, k2 in CC; repeat from \* to the end of the round.

**Rounds 10-11:** \*K1 in CC, k1 in MC; repeat from \* to the end of the round.

**Round 12:** Repeat Round 9.

**Round 13:** Repeat Round 8.

Chart 4



**Round 1:** \*K3 in MC, k1 in CC, k2 in MC; repeat from \* to the end of the round.

**Round 2:** \*K2 in MC, k3 in CC, k1 in MC; repeat from \* to the end of the round.

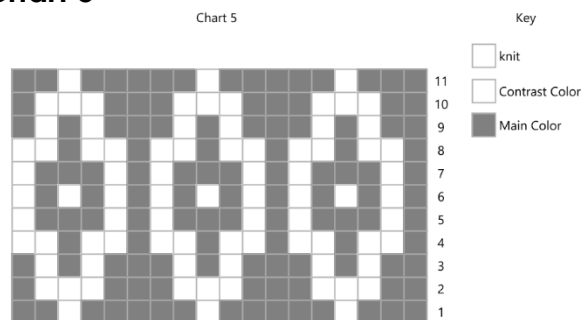


**Round 3:** \*K1 in MC, k2 in CC; repeat from \* to the end of the round.

**Round 4:** Repeat Round 2.

**Round 5:** Repeat Round 1.

### Chart 5



**Round 1:** \*K3 in MC, k1 in CC, k2 in MC; repeat from \* to the end of the round.

**Round 2:** \*K2 in MC, k3 in CC, k1 in MC; repeat from \* to the end of the round.

**Round 3:** \*K2 in MC, (k1 in CC, k1 in MC) 2 times; repeat from \* to the end of the round.

**Round 4:** \*K1 in MC, k2 in CC; repeat from \* to the end of the round.

**Round 5:** \*K1 in MC, k1 in CC, k3 in MC, k1 in CC; repeat from \* to the end of the round.

**Round 6:** \*K1 in MC, k1 in CC; repeat from \* to the end of the round.

**Round 7:** Repeat Round 5.

**Round 8:** Repeat Round 4.

**Round 9:** Repeat Round 3.

**Round 10:** Repeat Round 2.

**Round 11:** Repeat Round 1.

### Chart 6

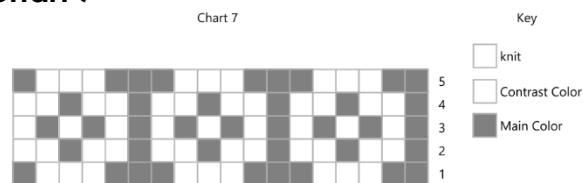


**Round 1:** \*K2 in MC, k3 in CC, k1 in MC; repeat from \* to the end of the round.

**Round 2:** \*K1 in MC, k2 in CC; repeat from \* to the end of the round.

**Round 3:** Repeat Round 1.

### Chart 7



**Round 1:** \*K2 in MC, k3 in CC, k1 in MC; repeat from \* to the end of the round.

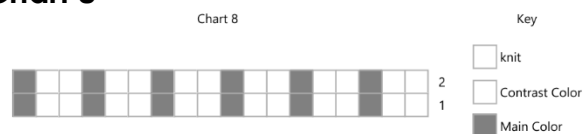
**Round 2:** \*K1 in MC, k2 in CC; repeat from \* to the end of the round.

**Round 3:** \*K1 in MC, k1 in CC; repeat from \* to the end of the round.

**Round 4:** Repeat Round 2.

**Round 5:** Repeat Round 1.

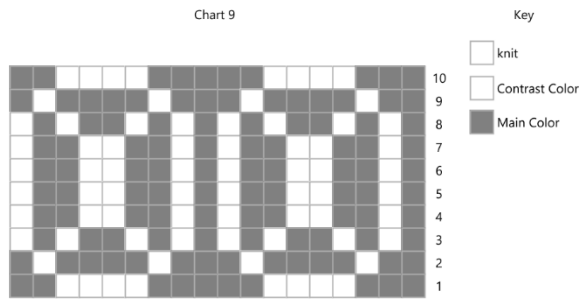
### Chart 8



**Rounds 1-2:** \*K2 in CC, k1 in MC; repeat from \* to the end of the round.



## Chart 9



**Round 1:** \*K3 in MC, k4 in CC, k2 in MC; repeat from \* to the end of the round.

**Round 2:** \*K2 in MC, k1 in CC, k4 in MC, k1 in CC, k1 in MC; repeat from \* to the end of the round.

**Round 3:** \*(K1 in MC, k1 in CC) 2 times, k1 in MC, (k1 in MC, k1 in CC) 2 times; repeat from \* to the end of the round.

**Rounds 4-7:** \*K1 in MC, k1 in CC, k2 in MC, k2 in CC, k2 in MC, k1 in CC; repeat from \* to the end of the round.

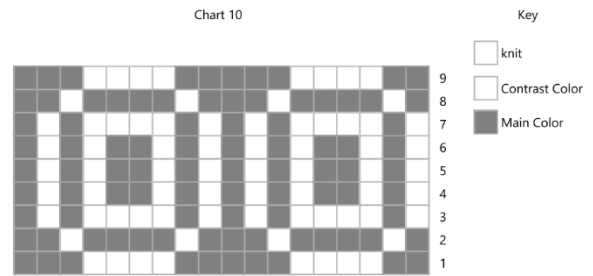
**Round 8:** Repeat Round 3.

**Round 9:** Repeat Round 2.

**Round 10:** Repeat Round 1.



## Chart 10



**Round 1:** \*K2 in MC, k4 in CC, k3 in MC; repeat from \* to the end of the round.

**Round 2:** \*K1 in MC, k1 in CC, k4 in MC, k1 in CC, k2 in MC; repeat from \* to the end of the round.

**Round 3:** \*K1 in CC, k1 in MC, k4 in CC, k1 in MC, k1 in CC, k1 in MC; repeat from \* to the end of the round.

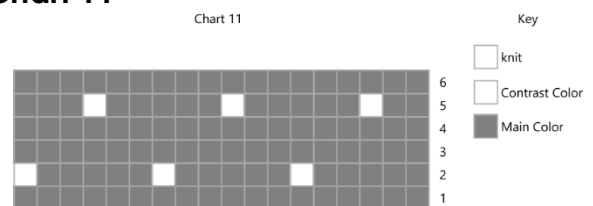
**Rounds 4-6:** \*(K1 in CC, k1 in MC) 2 times, k1 in MC, (K1 in CC, K1 in MC) 2 times; repeat from \* to the end of the round.

**Round 7:** Repeat Round 3.

**Round 8:** Repeat Round 2.

**Round 9:** Repeat Round 1.

## Chart 11



**Round 1:** With MC, knit.

**Round 2:** \*K5 in MC, k1 in CC; repeat from \* to the end of the round.

**Rounds 3-4:** With MC, knit.

**Round 5:** \*K2 in MC, k1 in CC, k3 in MC; repeat from \* to the end of the round.

**Round 6:** With MC, knit.