

# Bejeweled Cowl

by Shaina Bilow



Shine bright and stay warm! Glittering jewels worked in stranded colorwork sparkle around this reversible cozy cowl. The Bejeweled Cowl use two or more colors of fingering weight yarn.

# Sizing and Materials Details

**Sizes:** One Size

**Finished measurements:** 7.5"/19 cm width & 44"/110 cm length.

**Gauge:** 28 sts and 28 rounds = 4"/10 cm in stranded colorwork using size needle to obtain gauge.

**Needles:** US 2/2.75 mm 16"/40 cm circular needle or size needed for gauge. *Adjust needle size as necessary to obtain the correct gauge.*

**Yarn:** Main Color (MC): 650 yards of fingering weight (CYCA #1) yarn.

Contrast Color (CC): 510 total yards of fingering weight (CYCA #1) yarn in one or more colors.

**Other Materials:** Stitch marker(s), scrap yarn or spare CC for crochet cast on, US C/3mm crochet hook, tapestry needle, spare circular needle size US 2/2.75 mm or smaller.

## Pattern Notes

- Placing markers where the pattern repeats occur (at the \* in the stitch pattern) will help keep the stitch patterns correct throughout.
- The stitch pattern is a multiple of 18 stitches. To adjust the circumference of the cowl, cast on extra or fewer stitches in multiples of 18 according to gauge and preference. Yardage amounts necessary will vary.
- Colorwork patterns are provided in chart or written form. Where indicated, you are free to follow either version.
- The cowl is reversible and has a double-thick layer of fabric. It is worked in the round as a tube. Stitches are cast on provisionally and the cowl is worked in the round to desired length. Then, the live stitches from the provisional edge are grafted to the live stitches from the final edge to form a loop.
- The cowl pattern is written as an open-ended, choose-your-own adventure style. Cast on and follow the instructions for the base of the cowl, changing and adding patterns and colors as desired.

## Abbreviations

**CC** – Contrast Color.

**k** – knit.

**MC** – Main Color.

**st/sts** - stitch/stitches.

**St-st** – Stockinette Stitch: When worked in the round, knit every round.

## Tutorial Videos

Shaina's YouTube Channel

<https://www.youtube.com/shainabilow>

Crochet/Provisional Cast On

[https://youtu.be/uZrBw3jh2\\_s](https://youtu.be/uZrBw3jh2_s)

Tips for Working Stranded Colorwork

<https://youtube.com/shorts/NKeCx9wluec>

Grafting Stitches <https://youtu.be/A-PwmxPO7YQ>



# Instructions

With US 2 (2.75 mm) needles, size C/3 mm crochet hook, and scrap yarn or spare CC, provisionally cast on 108 sts using the Crochet Cast On. Attach MC and knit one row. Do not turn the work. Place marker and, being careful not to twist the sts, join the work in the round.

Work St-st for 2 rounds in MC.

Begin knitting Jewel Pattern charts as desired, working 2-4 rounds of solid MC between each chart. After completing a Jewel Pattern chart and when piece measures 44"/110 cm from the cast-on edge, secure all of the tails inside the cowl.

## Connect the Cowl Ends

Carefully unravel the provisional cast on and place the sts onto a spare circular needle. Ensuring that the cowl is not twisted, align the beginning of the round from the cast on edge with the beginning of the round just completed. Cut a piece of MC yarn that is approximately 60"/150 cm long and graft the two ends of the cowl together using the Kitchener Stitch.

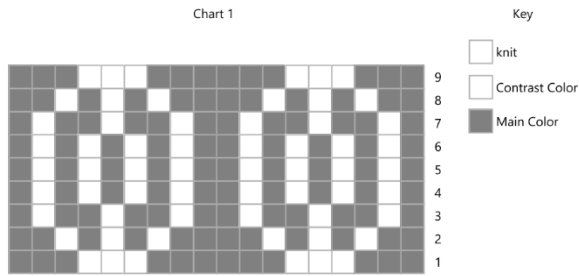
## Finishing

Weave in tails to the inside of the cowl. Block to smooth stitches.



# Jewel Patterns

Chart 1



**Round 1:** \*K3 in MC, k3 in CC, k3 in MC; repeat from \* to the end of the round.

**Round 2:** \*K2 in MC, (k1 in CC, k1 in MC) 3 times, k1 in MC; repeat from \* to the end of the round.

**Round 3:** \*K1 in MC, (k1 in CC, k2 in MC) 2 times, k1 in CC, k1 in MC; repeat from \* to the end of the round.

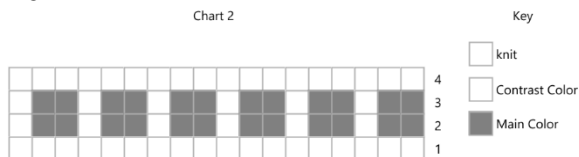
**Rounds 4-6:** \*K1 in MC, (k1 in CC, K1 in MC) 4 times; repeat from \* to the end of the round.

**Round 7:** Repeat Round 3.

**Round 8:** Repeat Round 2.

**Round 9:** Repeat Round 1.

Chart 2

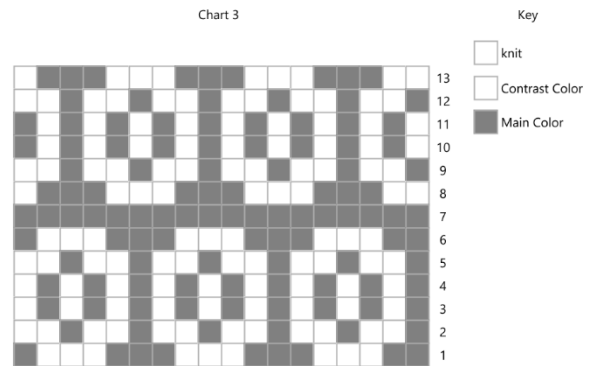


**Round 1:** With CC, knit.

**Rounds 2-3:** \*K2 in MC, k1 in CC; repeat from \* to the end of the round.

**Round 4:** With CC, knit.

Chart 3



**Round 1:** \*K2 in MC, k3 in CC, k1 in MC; repeat from \* to the end of the round.

**Round 2:** \*K1 in MC, k2 in CC; repeat from \* to the end of the round.

**Rounds 3-4:** \*K1 in MC, k1 in CC; repeat from \* to the end of the round.

**Round 5:** Repeat Round 2.

**Round 6:** Repeat Round 1.

**Round 7:** With MC, knit.

**Round 8:** \*K2 in CC, k3 in MC, k1 in CC; repeat from \* to the end of the round.

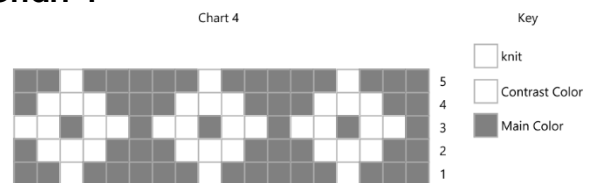
**Round 9:** \*K1 in MC, k2 in CC; repeat from \* to the end of the round.

**Rounds 10-11:** \*K1 in CC, k1 in MC; repeat from \* to the end of the round.

**Round 12:** Repeat Round 9.

**Round 13:** Repeat Round 8.

Chart 4



**Round 1:** \*K3 in MC, k1 in CC, k2 in MC; repeat from \* to the end of the round.

**Round 2:** \*K2 in MC, k3 in CC, k1 in MC; repeat from \* to the end of the round.

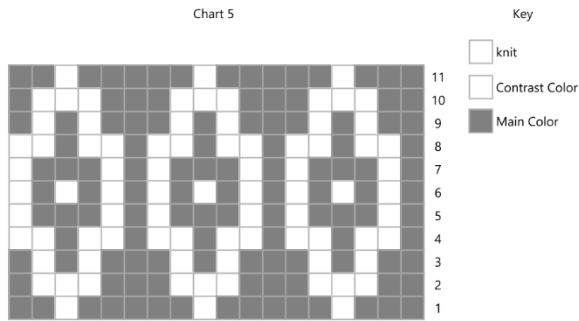


**Round 3:** \*K1 in MC, k2 in CC; repeat from \* to the end of the round.

**Round 4:** Repeat Round 2.

**Round 5:** Repeat Round 1.

### Chart 5



**Round 1:** \*K3 in MC, k1 in CC, k2 in MC; repeat from \* to the end of the round.

**Round 2:** \*K2 in MC, k3 in CC, k1 in MC; repeat from \* to the end of the round.

**Round 3:** \*K2 in MC, (k1 in CC, k1 in MC) 2 times; repeat from \* to the end of the round.

**Round 4:** \*K1 in MC, k2 in CC; repeat from \* to the end of the round.

**Round 5:** \*K1 in MC, k1 in CC, k3 in MC, k1 in CC; repeat from \* to the end of the round.

**Round 6:** \*K1 in MC, k1 in CC; repeat from \* to the end of the round.

**Round 7:** Repeat Round 5.

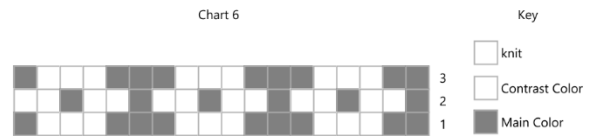
**Round 8:** Repeat Round 4.

**Round 9:** Repeat Round 3.

**Round 10:** Repeat Round 2.

**Round 11:** Repeat Round 1.

### Chart 6

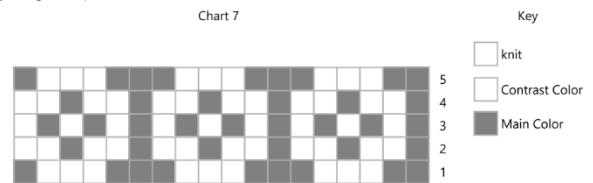


**Round 1:** \*K2 in MC, k3 in CC, k1 in MC; repeat from \* to the end of the round.

**Round 2:** \*K1 in MC, k2 in CC; repeat from \* to the end of the round.

**Round 3:** Repeat Round 1.

### Chart 7



**Round 1:** \*K2 in MC, k3 in CC, k1 in MC; repeat from \* to the end of the round.

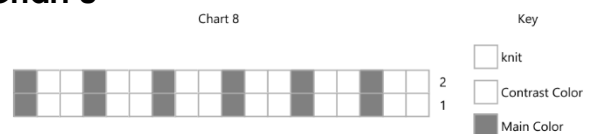
**Round 2:** \*K1 in MC, k2 in CC; repeat from \* to the end of the round.

**Round 3:** \*K1 in MC, k1 in CC; repeat from \* to the end of the round.

**Round 4:** Repeat Round 2.

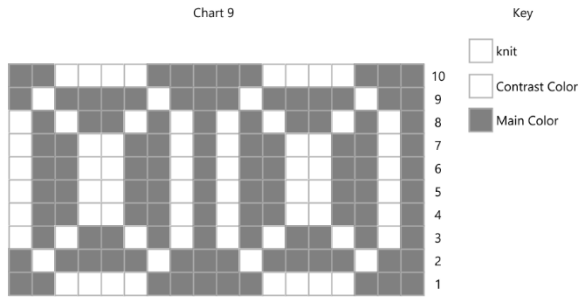
**Round 5:** Repeat Round 1.

### Chart 8



**Rounds 1-2:** \*K2 in CC, k1 in MC; repeat from \* to the end of the round.

## Chart 9



**Round 1:** \*K3 in MC, k4 in CC, k2 in MC; repeat from \* to the end of the round.

**Round 2:** \*K2 in MC, k1 in CC, k4 in MC, k1 in CC, k1 in MC; repeat from \* to the end of the round.

**Round 3:** \*(K1 in MC, k1 in CC) 2 times, k1 in MC, (k1 in MC, k1 in CC) 2 times; repeat from \* to the end of the round.

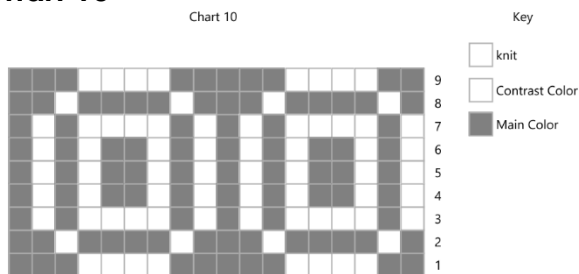
**Rounds 4-7:** \*K1 in MC, k1 in CC, k2 in MC, k2 in CC, k2 in MC, k1 in CC; repeat from \* to the end of the round.

**Round 8:** Repeat Round 3.

**Round 9:** Repeat Round 2.

**Round 10:** Repeat Round 1.

## Chart 10



**Round 1:** \*K2 in MC, k4 in CC, k3 in MC; repeat from \* to the end of the round.

**Round 2:** \*K1 in MC, k1 in CC, k4 in MC, k1 in CC, k2 in MC; repeat from \* to the end of the round.

**Round 3:** \*K1 in CC, k1 in MC, k4 in CC, k1 in MC, k1 in CC, k1 in MC; repeat from \* to the end of the round.

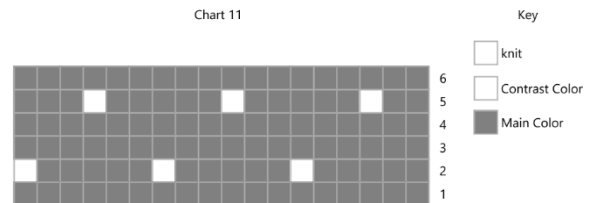
**Rounds 4-6:** \*(K1 in CC, k1 in MC) 2 times, k1 in MC, (K1 in CC, K1 in MC) 2 times; repeat from \* to the end of the round.

**Round 7:** Repeat Round 3.

**Round 8:** Repeat Round 2.

**Round 9:** Repeat Round 1.

## Chart 11



**Round 1:** With MC, knit.

**Round 2:** \*K5 in MC, k1 in CC; repeat from \* to the end of the round.

**Rounds 3-4:** With MC, knit.

**Round 5:** \*K2 in MC, k1 in CC, k3 in MC; repeat from \* to the end of the round.

**Round 6:** With MC, knit.